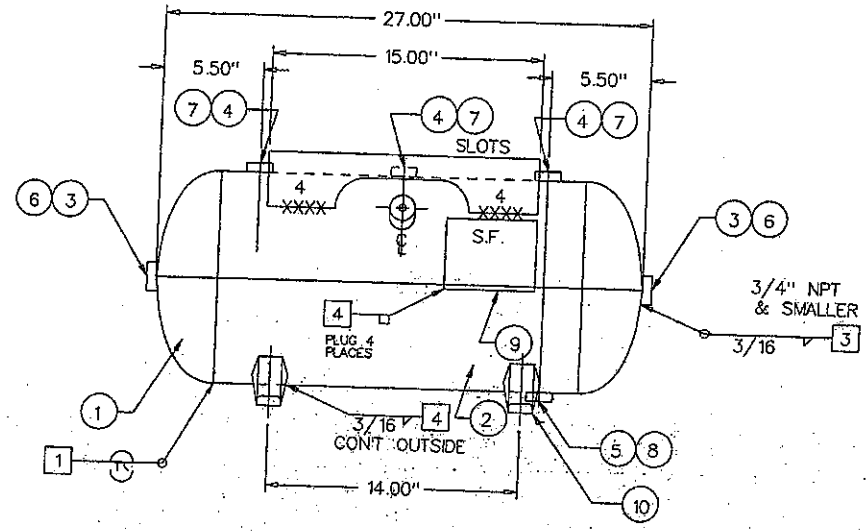
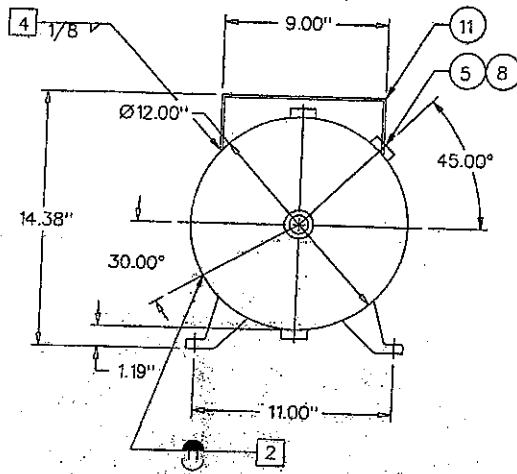


#2 .094 X 20-1/4" X 37-3/8"
 #11 10 GA X 53" X 69" (10 TO 1)



POWDER PAINT H.H. GREY PRIMER

ATTACHMENT WPS
 3/16 & BELOW A569 SFI-6
 5/16 & ABOVE A36 SFI-2-1
 STRUCTURAL A36 SFI-2-1
 1/4 A635 SFI-3

STD 12 GAL (1.56 FT³) HORIZONTAL REC.

ORIGINALLY BUILT IN ACCORDANCE WITH THE LATEST EDITION OF THE A.S.M.E. CODE, SECTION VIII, DIV. 1, SECTIONS 2, 5, & 9

WEIGHT IS APPROXIMATELY 44 LBS

NO.	DATE	REVISION	QCM
1	11/18/91	GENERAL REVISION	CC
2	1/13/97	WAS "U" STAMP	BW
3	3/19/97	REVISED & REDRAWN	BW
4	1/07/00	UPDATE PER 99 ADDENDA	BW
5	5/12/00	CHANGE PAINT SPEC.	

HEAD THK: .094 MIN	MAT'L SA414-G	EFF 85%
SHELL THK: .094 NOM.	MAT'L SA414-G	EFF 70%
NAT'L BD. NO	MAMP 200 PSI AT 450 °F	
STAMP: "UM" STAMP (2)	MDMT -20 °F AT 200 PSI	
CRN: H7953.5C	TEST: HYDRO AT 260 PSI	
REF: SFI STOCK	PNEU. AT 260 PSI	

ITEM	P/N	DESCRIPTION	QTY
1	H12094J	12"OD 2:1 SE JOGGLE HEAD	2
2	R100002	.094 ROLLED SHELL	1
3	F100750	3/4" SERIES 384 NPT	2
4	F100500	1/2" SERIES 383 NPT	3
5	F100250	1/4" SERIES 381 NPT	2
6	F500750	3/4" PLASTIC PLUG	2
7	F500500	1/2" PLASTIC PLUG	3
8	F500250	1/4" PLASTIC PLUG	2
9	S100001	NAME PLATE	1
10	S100060	H1011 DEFIANCE FOOT	4
11	S100042	10 GA TOP PLATE	1

DESIGN & CALCULATIONS COMPLY WITH A.S.M.E. CODE SECTION VIII DIV. 1

20..... EDITION
 ADDENDA

DWG CHECKED BY.....
 DWG APPROVED BY.....

WPS DRAWINGS

- 1 SFI-1 OR SFI-2 SK 1
- 2 SFI-1 OR SFI-14 SK 2
- 3 SFI-2-1
- 4 SEE ATTACHMENT
- SFI STOCK

- NDE
- MAGNETIC PARTICLE
- SPOT X-RAY PER UW52
- FULL X-RAY PER UW51

QCM APPROVAL

DATE

OAKVILLE, ONT.

DRAWN BY: RGO

DATE 3/25/89

STEEL FAB ABINGDON, VA

P/N

A10024

PER CHART