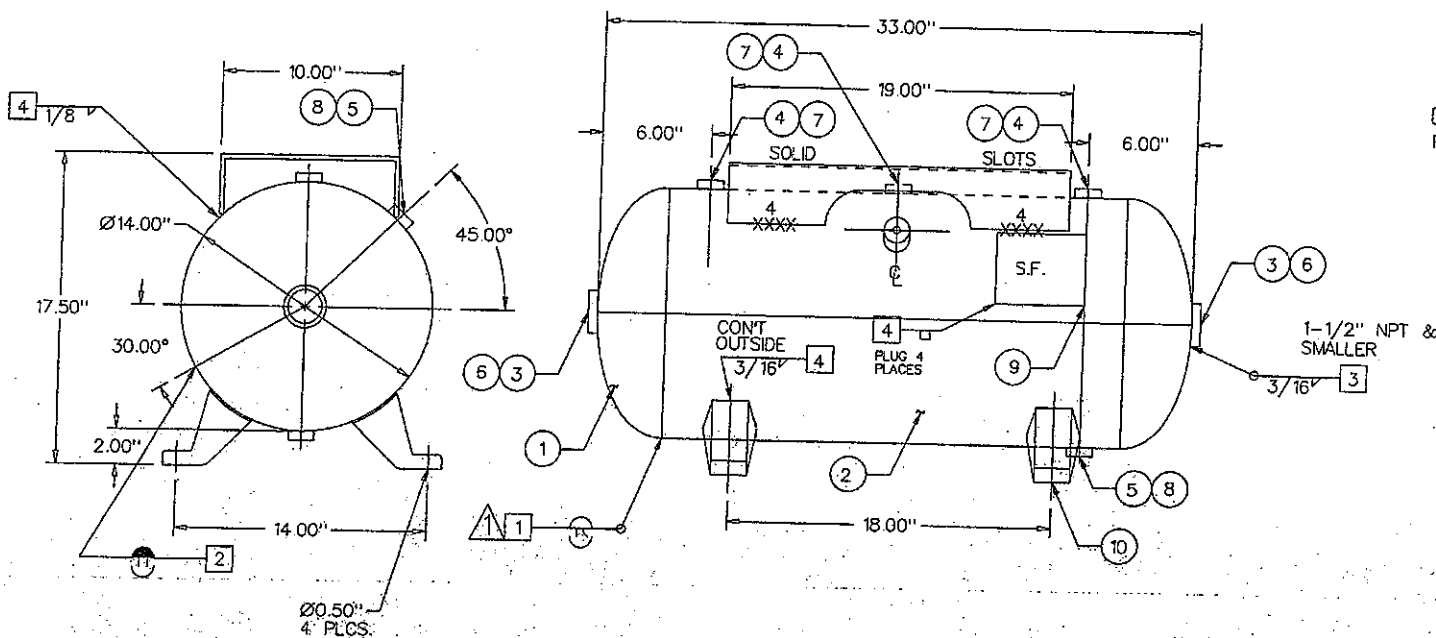


#2 .106 X 25-1/2" X 43-1/2"
 #11 10 GA. X 60" X 78" (12 TO 1)



ITEM	P/N	DESCRIPTION	QTY
1	H14094J	14"OD 2:1 SE JOGGLE HEAD	2
2	R100022	.106 ROLLED SHELL	1
3	F101500	1-1/2" FLAT NPT	2
4	F100500	1/2" SERIES 383 NPT	3
5	F100250	1/4" SERIES 381 NPT	2
6	F501500	1-1/2" PLASTIC PLUG	2
7	F500500	1/2" PLASTIC PLUG	3
8	F500250	1/4" PLASTIC PLUG	2
9	S100001	NAME PLATE	1
10	S101453	H18X FOOT	4
11	S100044	TOP PLATE	1

DESIGN & CALCULATIONS COMPLY WITH
 A.S.M.E. CODE SECTION VIII DIV. 1
 20..... EDITION
 ADDENDA
 DWG. CHECKED BY.....
 DWG. APPROVED BY.....

POWDER PAINT H.H. GREY PRIMER

ATTACHMENT WPS.
 3/16 & BELOW A569 SFI-6
 5/16 & ABOVE A36 SFI-2-1
 STRUCTURAL A36 SFI-2-1
 1/4 A635 SFI-3

FITTINGS = SA181 CL70
 ORIGINALLY
 BUILT IN ACCORDANCE WITH THE LATEST EDITION OF THE
 A.S.M.E. CODE, SECTION VIII, DIV. 1, SECTIONS 2, 5, & 9
 WEIGHT IS APPROXIMATELY 63 LBS

STD. 20 GAL. (2.67-FT³) HORIZONTAL REC.

WPS DRAWINGS	NDE
1 SFI-2-1 OR SFI-1 SK 1	MAGNETIC PARTICLE
2 SFI-1 OR SFI-14 SK 2	SPOT X-RAY PER UW52
3 SFI-2-1	FULL X-RAY PER UW51
4 SEE ATTACHMENT	QCM APPROVAL
SFI STOCK	DATE

NO.	DATE	REVISION	QCM	NO.	DATE	REVISION	QCM
7	2/28/97	REVISED & REDRAWN	BW	1	8/13/90	SHELL CHANGE	GJ
8	3/13/98	TAKE OFF FULL VACUUM	BW	2	12/19/90	WAS 3/4" IN HEADS	GJ
9	1/07/00	UPDATE PER 99 ADDENDA	BW	3	11/19/91	GENERAL REVISION	CC
10	5/12/00	CHANGE PAINT SPEC.		4	10/20/93	FULL VACUUM	CC
				5	2/14/97	WAS "U" STAMP	BW
				6	2/26/97	FOOT CHANGED	BW

HEAD THK: .094 MIN. MATL SA414-G EFF 85%
 SHELL THK: .106 NOM. MATL SA414-G EFF 70%
 NATL BD. NO
 STAMP: "UM" STAMP (5)
 CRN: H7952.5C
 REF: SFI STOCK
 MAWP 200 PSI AT (8) 450 °F
 MDMT -20 °F AT 200 PSI
 TEST: HYDRO AT 260 PSI
 PNEU. AT 260 PSI

OAKVILLE, ONT. STEEL FAB ABINGDON, VA
 DRAWN BY: RGO P/N A10026
 DATE 3/25/89

PER CHART