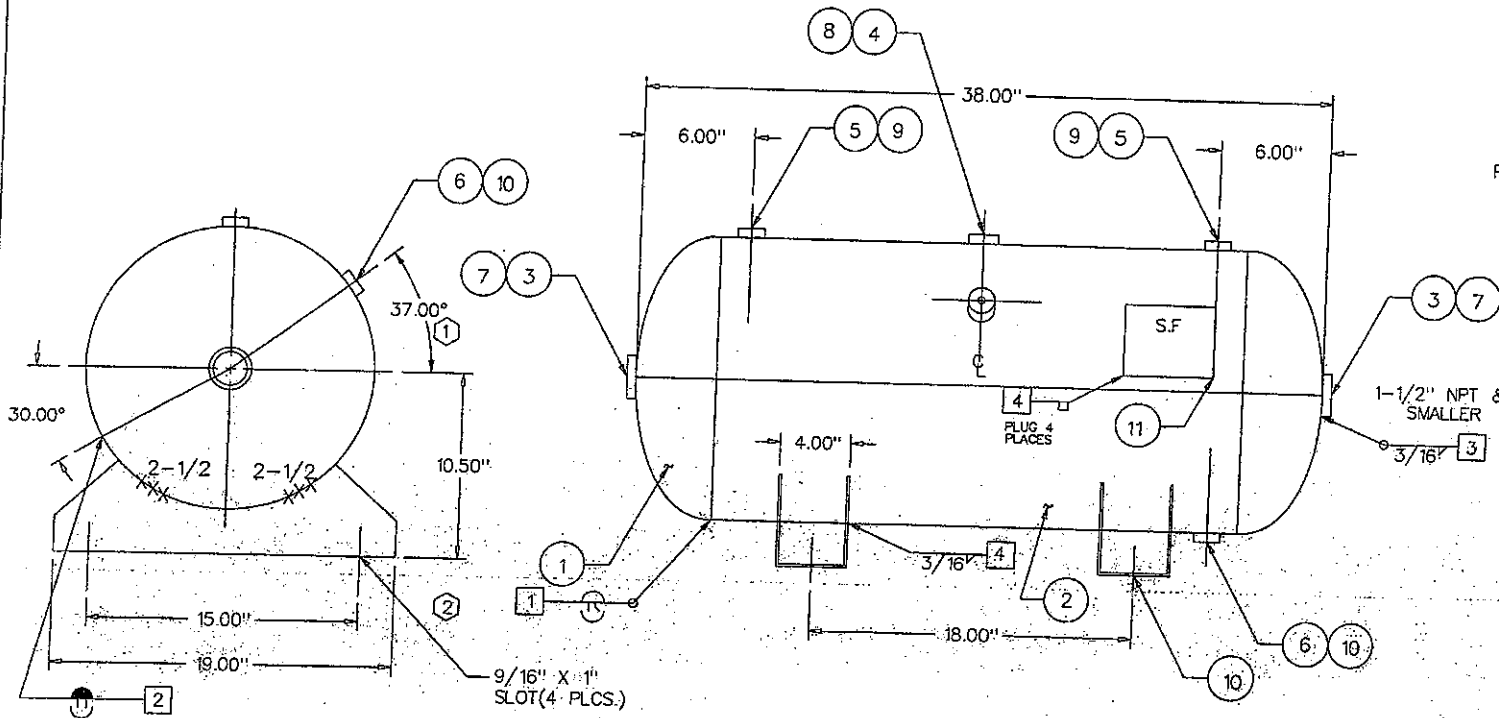


#2 .121 x 29-1/4" x 49-7/8"  
 #12 .134 x 60" x 78" (18 to 1)



FITTINGS = SA181 CL70

ORIGINALLY BUILT IN ACCORDANCE WITH THE LATEST EDITION OF THE A.S.M.E. CODE, SECTION VIII, DIV. 1, SECTIONS 2, 5, & 9. WEIGHT IS APPROXIMATELY 79 LBS.

POWDER PAINT H.H. GREY PRIMER

ATTACHMENT WPS  
 3/16 & BELOW A569 SFI-6  
 5/16 & ABOVE A36 SFI-2-1  
 STRUCTURAL A36 SFI-2-1  
 1/4 A635 SFI-3

STD. 30 GAL. (4.01 FT<sup>3</sup>) HORIZONTAL REC.

| NO. | DATE    | REVISION              | QCM | NO. | DATE     | REVISION          | QCM |
|-----|---------|-----------------------|-----|-----|----------|-------------------|-----|
| 7   | 3/13/98 | TAKE OFF FULL VACUUM  | BW  | 1   | 9/18/89  | WAS 45°           | GJ  |
| 8   | 1/07/00 | UPDATE PER 99 ADDENDA | BW  | 2   | 3/22/91  | WAS DEFIANCE FOOT | GJ  |
| 9   | 5/12/00 | CHANGE PAINT SPEC     | BW  | 3   | 11/18/91 | GENERAL REVISION  | CC  |
| 10  | 3/28/00 | CHANGE CRN            | BW  | 4   | 10/29/93 | FULL VACUUM       | CC  |
| 11  | 1/25/02 | CRN / PART # CHANGE   | BW  | 5   | 1/3/97   | WAS "U" STAMP     | BW  |
| 12  | 3/28/00 | CORRECT MIN./NOM.     | BW  | 6   | 3/3/97   | REVISED & REDRAWN | BW  |

HEAD THK: .099 MIN. MAT'L SA414-G EFF 85%  
 SHELL THK: .121 NOM. MAT'L SA414-G EFF 70%  
 NAT'L BD. NO.  
 STAMP: "UM" STAMP (5)  
 CRN: H79515C (11)(12)  
 REF: SFI STOCK  
 MAWP 200 PSI AT (7) 400 °F  
 MDMT -20 °F AT 200 PSI  
 TEST: HYDRO AT 260 PSI  
 PNEU. AT 260 PSI

(11) SW

| ITEM | P/N     | DESCRIPTION              | QTY |
|------|---------|--------------------------|-----|
| 1    | H16099J | 16"OD 2:1 SE JOGGLE HEAD | 2   |
| 2    | R100023 | .121 MIN. ROLLED SHELL   | 1   |
| 3    | F101500 | 1-1/2" FLAT NPT          | 2   |
| 4    | F100750 | 3/4" SERIES 384 NPT      | 1   |
| 5    | F100500 | 1/2" SERIES 383 NPT      | 2   |
| 6    | F100250 | 1/4" SERIES 381 NPT      | 2   |
| 7    | F501500 | 1-1/2" PLASTIC PLUG      | 2   |
| 8    | F500750 | 3/4" PLASTIC PLUG        | 1   |
| 9    | F500500 | 1/2" PLASTIC PLUG        | 2   |
| 10   | F500250 | 1/4" PLASTIC PLUG        | 2   |
| 11   | S100001 | NAME PLATE               | 1   |
| 12   | S100111 | CHANNEL FOOT             | 2   |

DESIGN & CALCULATIONS COMPLY WITH A.S.M.E. CODE SECTION VIII DIV. 1  
 19..... EDITION  
 ..... ADDENDA  
 DWG. CHECKED BY.....  
 DWG. APPROVED BY.....

| WPS DRAWINGS                       | NDE                   |
|------------------------------------|-----------------------|
| 1 SFI-1 OR SFI-2-1 SK 1            | 1 MAGNETIC PARTICLE   |
| 2 SFI-1 OR SFI-14 SK 1             | 2 SPOT X-RAY PER UW52 |
| 3 SFI-2-1                          | 3 FULL X-RAY PER UW51 |
| 4 SEE ATTACHMENT                   | QCM APPROVAL          |
| <input type="checkbox"/> SFI STOCK | DATE                  |

OAKVILLE, ONT. STEEL FAB ABINGDON, VA  
 DRAWN BY: RGO P/N  
 DATE 3/25/89 A10027