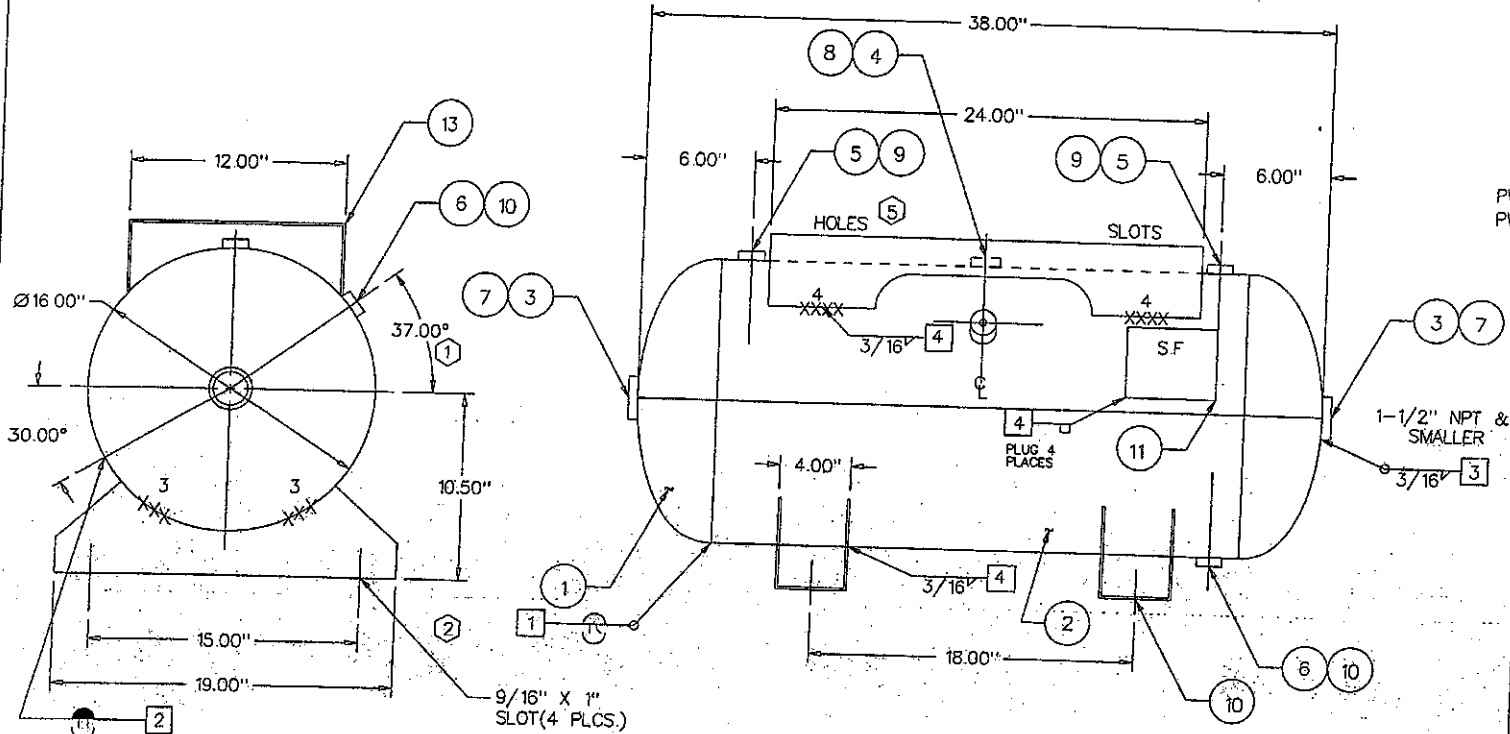


#2 .121 x 29-1/4" x 49-7/8"
 #12 .134 x 60" x 78" (18 TO 1)
 #13 .134 X 48" X 78" (6 TO 1)



ITEM	P/N	DESCRIPTION	QTY
1	H16099J	16"OD 2:1 SE JOGGLE HEAD	2
2	R100003	.121 MIN. ROLLED SHELL	1
3	F101500	1-1/2" FLAT NPT	2
4	F100750	3/4" SERIES 384 NPT	1
5	F100500	1/2" SERIES 383 NPT	2
6	F100250	1/4" SERIES 381 NPT	2
7	F501500	1-1/2" PLASTIC PLUG	2
8	F500750	3/4" PLASTIC PLUG	1
9	F500500	1/2" PLASTIC PLUG	2
10	F500250	1/4" PLASTIC PLUG	2
11	S100001	NAME PLATE	1
12	S100111	CHANNEL FOOT	2
13	S100045	TOP PLATE	1

DESIGN & CALCULATIONS COMPLY WITH
 A.S.M.E. CODE SECTION VIII DIV. 1
 20..... EDITION
 ADDENDA
 DWG. CHECKED BY L.P.S. 3/30/05
 DWG. APPROVED BY L.P.S. 3/30/05

WPS DRAWINGS	NDE
1 SFI-1 OR SFI-2-1 SK 1	1 MAGNETIC PARTICLE
2 SFI-1 OR SFI-14 SK 2	2 SPOT X-RAY PER UWS2
3 SFI-2-1	3 FULL X-RAY PER UWS1
4 SEE ATTACHMENT	QCM APPROVAL
<input type="checkbox"/> SFI STOCK	BW
	DATE 3/30/05

FITTINGS = SA181 CL70

POWDER PAINT H.H. GREY PRIMER

ATTACHMENT WPS
 3/16 & BELOW A569 SFI-6
 5/16 & ABOVE A36 SFI-2-1
 STRUCTURAL A36 SFI-2-1
 1/4 A635 SFI-3

ORIGINALLY BUILT IN ACCORDANCE WITH THE LATEST EDITION OF THE A.S.M.E. CODE, SECTION VIII, DIV. 1, SECTIONS 2, 5, & 9.

WEIGHT IS APPROXIMATELY 99 LBS

STD. 30 GAL. (4.01 FT³) HORIZONTAL REC.

CALCULATED HEAD MIN. = .094
 SPECIFIED HEAD MIN. = .099

NO.	DATE	REVISION	QCM	NO.	DATE	REVISION	QCM
7	3/13/98	TAKE OFF FULL VACUUM	BW	1	9/19/89	WAS 45°	GJ
8	1/07/00	UPDATE PER 99 ADDENDA	BW	2	3/22/91	WAS DEFIANCE FOOT	GJ
9	5/12/00	CHANGE PAINT SPEC.	BW	3	11/18/91	GENERAL REVISION	CC
				4	10/29/93	FULL VACUUM	CC
				5	1/3/97	WAS "U" STAMP & SOLD TOP	BW
				6	3/3/97	REVISED & REDRAWN	BW

HEAD THK: .099 MIN. MATL SA414-G EFF 85%
 SHELL THK: .121 NOM. MATL SA414-G EFF 70%
 NATL BD. NO
 STAMP: "UM" STAMP (5)
 CRN: H79515C
 REF: SFI STOCK
 MAWP 200 PSI AT (7) 450 °F
 MDMT -20 °F AT 200 PSI
 TEST: HYDRO AT 260 PSI
 PNEU AT 260 PSI

OAKVILLE, ONT. **STEEL FAB** ABINGDON, VA
 DRAWN BY: RGO P/N
 DATE 3/25/89 **A10028**