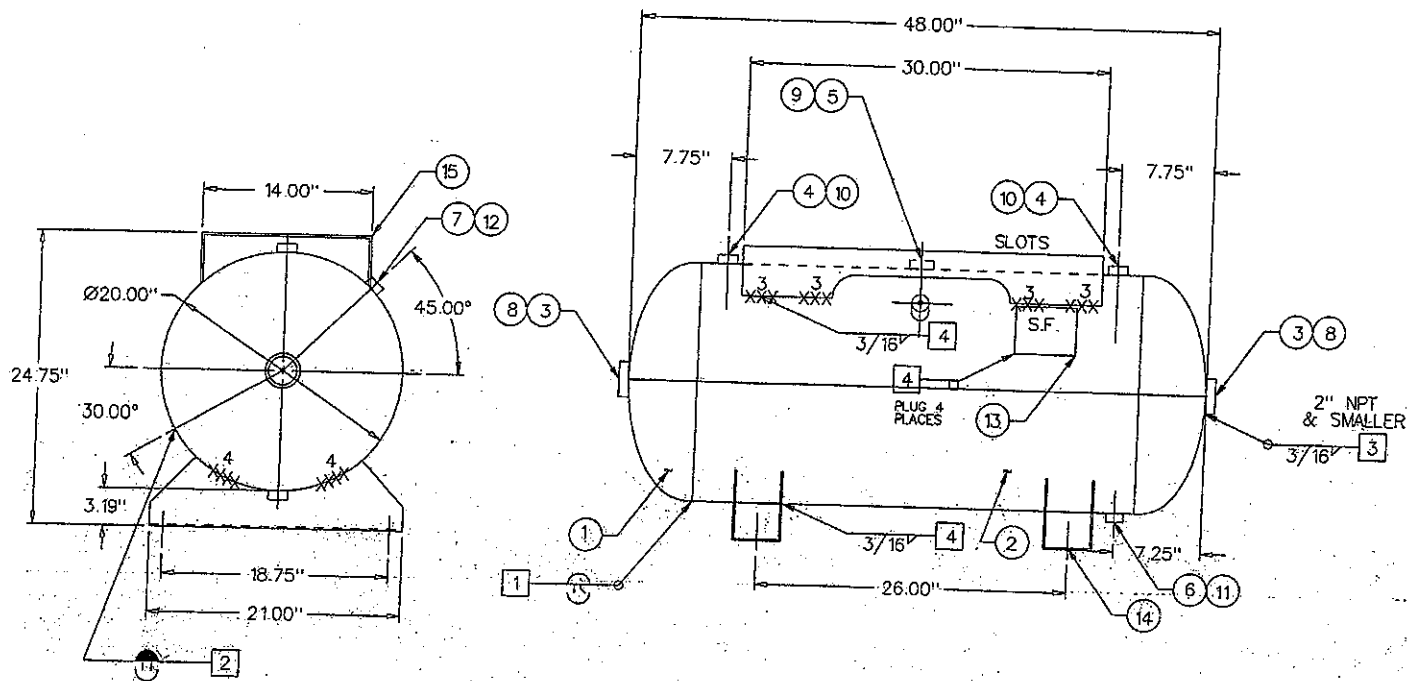


- #2 .151 X 36-1/2" X 62-3/8"
- #14 .134 X 48" X 66" (10 TO 1)
- #15 .188 X 60" X 120" (5 TO 1)



ITEM	P/N	DESCRIPTION	QTY
1	H20124J	20"OD 2:1 SE JOGGLE HEAD	2
2	R100005	.151 ROLLED SHELL	1
3	F102000	2" FLAT NPT	2
4	F100750	3/4" SERIES 384 NPT	2
5	F101000	1" SERIES 385 NPT	1
6	F100500	1/2" SERIES 383 NPT	1
7	F100250	1/4" SERIES 381 NPT	1
8	F502000	2" PLASTIC PLUG	2
9	F501000	1" PLASTIC PLUG	1
10	F500750	3/4" PLASTIC PLUG	2
11	F500500	1/2" PLASTIC PLUG	1
12	F500250	1/4" PLASTIC PLUG	1
13	S100001	NAME PLATE	1
14	S100039	CHANNEL FOOT	2
15	S100046	TOP PLATE	1

DESIGN & CALCULATIONS COMPLY WITH  
A.S.M.E. CODE SECTION VIII DIV. 1

20..... EDITION  
..... ADDENDA

DWG. CHECKED BY.....  
DWG. APPROVED BY.....

WPS DRAWINGS

1 SFI-2-1 OR SFI-1 SK 1

2 SFI-2-1 OR SFI-1 SK 2

3 SFI-2-1

4 ATTACHMENT

SFI STOCK

NDE

▲ MAGNETIC PARTICLE

▲ SPOT X-RAY PER UWS2

▲ FULL X-RAY PER UWS1

OCM APPROVAL

DATE

ATTACHMENT WPS  
3/16" & BELOW A569 SFI-G  
5/16" & ABOVE A36 SFI-2-1  
STRUCTURAL A36 SFI-2-1  
1/4" A635 SFI-3

FITTINGS = SA181 CL 70

BUILT IN ACCORDANCE WITH THE LATEST EDITION OF THE  
A.S.M.E. CODE, SECTION VIII, DIV. 1, SECTIONS 2, 5, & 9  
REGISTERED WITH NATIONAL BOARD

WEIGHT IS APPROXIMATELY 177 LBS

POWDER PAINT H.H. GREY PRIMER

CALCULATED HEAD MIN. = .109"  
SPECIFIED HEAD MIN. = .124"  
STD. 60 GAL. HORIZONTAL REC.

NO.	DATE	REVISION	QCM
1	11/18/91	GENERAL REVISION	CC
2	3/3/97	REVISED & REDRAWN	BW
3	11/25/97	MOVED DRAIN TO 7.25"	BW
4	1/07/00	UPDATE PER 99 ADDENDA	BW
5	5/12/00	CHANGE PAINT SPEC.	

HEAD THK: .124 MIN.	MAT'L SA414-G	EFF 85%
SHELL THK: .151 NOM.	MAT'L SA414-G	EFF 70%
NAT'L BD. YES	MAWP 200 PSI AT 450 °F	
STAMP: "U" STAMP	MDMT -20 °F AT 200 PSI	
CRN: H12915C	TEST: HYDRO AT 260 PSI	
REF: SFI STOCK	PNEU. AT: 260 PSL	

OAKVILLE, ONT.

DRAWN BY: RGO

DATE 3/25/89

STEEL FAB ABINGDON, VA

P/N A10030