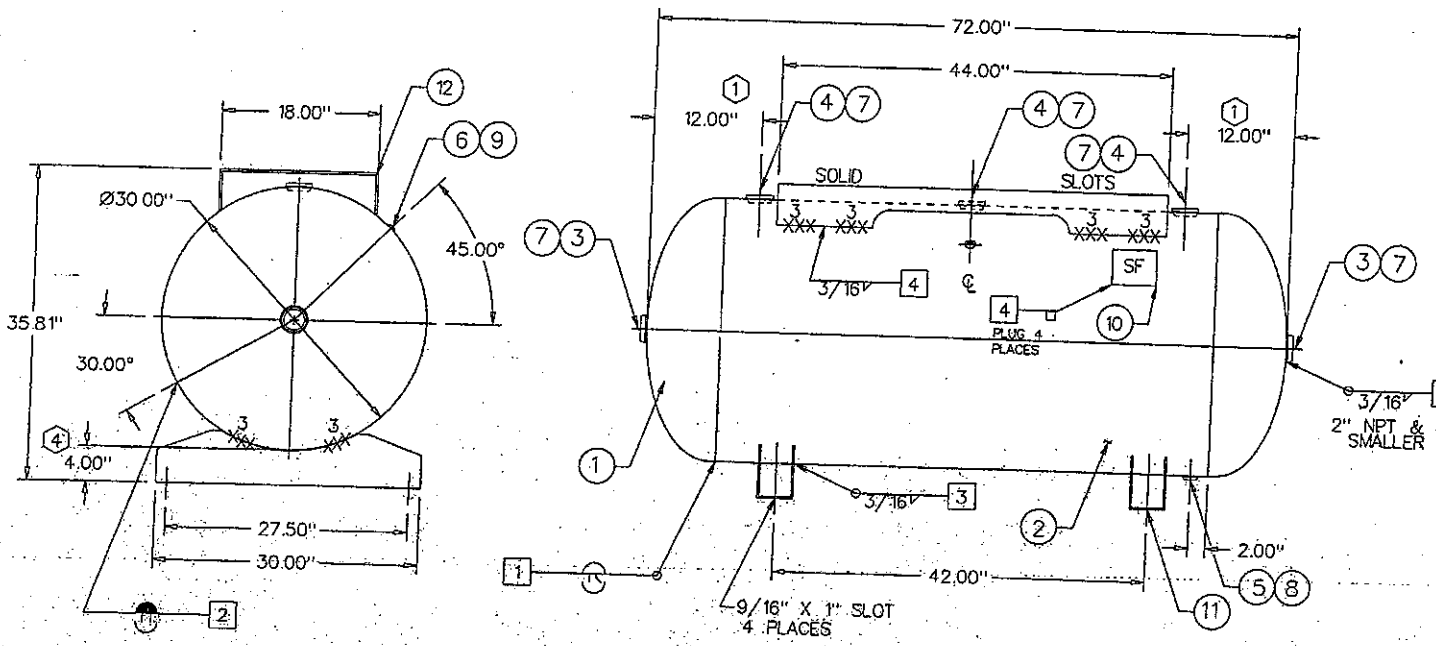


A10036 OR 0016  
 #11 .187" X 48" X 62" (6 TO 1)  
 #12 .250 X 48" X 62" (2 TO 1)



ATTACHMENT WPS  
 3/16 & BELOW A569 SFI-6  
 5/16 & ABOVE A36 SFI-2-1  
 STRUCTURAL A36 SFI-2-1  
 1/4 A635 SFI-3

FITTINGS = SA181 CL70

POWDER PAINT H.H. GREY PRIMER

30 X 72 HORIZONTAL AIR RECEIVER (200 GAL. APPROX.)

BUILT IN ACCORDANCE WITH THE LATEST EDITION OF THE  
 A.S.M.E. CODE SECTION VIII DIV. 1, SECTIONS 2, 5, & 9  
 REGISTERED WITH NATIONAL BOARD

SHIPPING WEIGHT = 570#

NO.	DATE	REVISION	QCM	HEAD THK: .164 MIN.	MAT'L SA414-G	EFF 85%
7	9/22/05	REVISED MATERIAL THICKNESSES, CRN, TEMP	CC	SHELL THK: .199 NOM.	MAT'L SA414-G	EFF 70%
2	11/19/91	GENERAL REVISION	CC	NAT'L BD. YES		
3	2/20/97	REVISED & REDRAWN	BW	STAMP: "U" STAMP		MAWP 200 PSI AT 400 °F
4	12/3/97	WAS 3.19" NOW 4"	BW	CRN: L4036.5C		MDMT -20 °F AT 200 PSI
5	1/07/00	UPDATE TO '99' ADDENDA	BW	REF:		TEST: HYDRO AT 260 PSI
6	5/12/00	CHANGE PAINT SPEC.				PNEU. AT 260 PSI

ITEM	P/N	DESCRIPTION	QTY
1	H30174J	30"OD 2:1 SE JOGGLE HEAD	2
2	R100063	.199 X 55.5 X 93.500	1
3	F102000	2" FLAT NPT	2
4	F102001	2" RAD. NPT	3
5	F101000	1" SERIES 385 NPT	1
6	F100250	1/4" SERIES 381 NPT	1
7	F502000	2" PLASTIC PLUG	5
8	F501000	1" PLASTIC PLUG	1
9	F500250	1/4" PLASTIC PLUG	1
10	S100001	NAME PLATE	1
11	S100040	30" CHANNEL FEET	2
12	S100049	TOP PLATE	1

DESIGN & CALCULATIONS COMPLY WITH  
 A.S.M.E. CODE SECTION VIII DIV. 1  
 20..... EDITION  
 20..... ADDENDA  
 DWG. CHECKED BY JE 9/22/05  
 DWG. APPROVED BY JE 9/22/05

WPS DRAWINGS	NDE
1 SFI-1 SK 1	1 MAGNETIC PARTICLE
2 SFI-1 SK 2	2 SPOT X-RAY PER UWS2
3 SFI-2-1	3 FULL X-RAY PER UWS1
4 SEE ATTACHMENT	QCM APPROVAL
<input type="checkbox"/> SFI STOCK	DATE

OAKVILLE, ONT. STEEL FAB ABINGDON, VA  
 DRAWN BY: RGO P/N  
 DATE 3/25/89 A10036  
 PER CHART