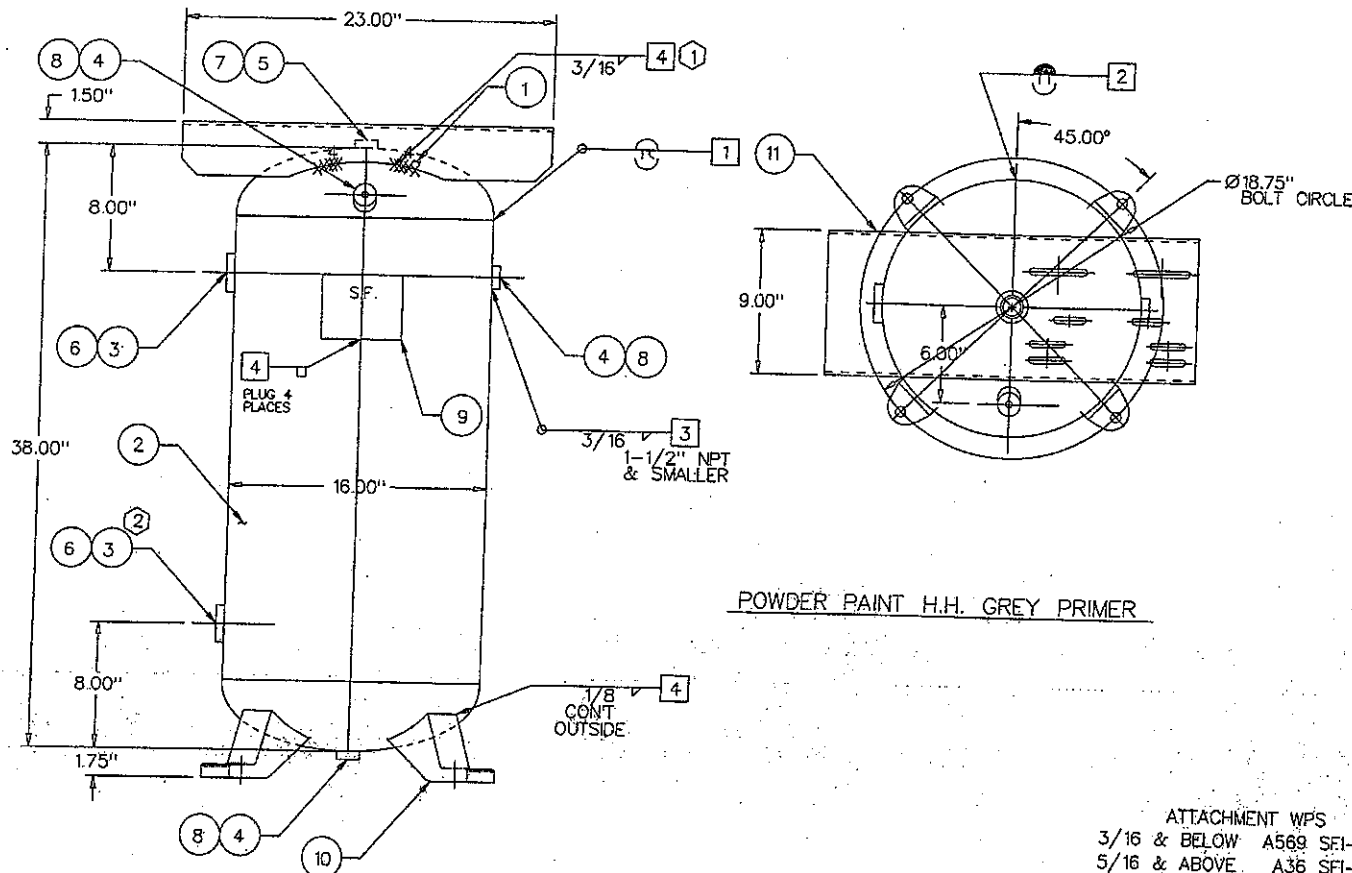


#2 .121 X 29-1/4" X 49-7/8"
 #11 .188 X 48" X 62" (8 TO 1)



ITEM	P/N	DESCRIPTION	QTY
1	H16099J	16"OD 2:1 SE JOGGLE HEAD	2
2	R100003	.121 ROLLED SHELL	1
3	F101501	1-1/2"RAD NPT	2
4	F100250	1/4" SERIES 381 NPT	3
5	F100500	1/2" SERIES 383 NPT	1
6	F501500	1-1/2" PLASTIC PLUG	2
7	F500500	1/2" PLASTIC PLUG	1
8	F500250	1/4" PLASTIC PLUG	3
9	S100001	NAME PLATE	1
10	S101453	H1BX FOOT	4
11	S100051	TOP PLATE	1

DESIGN & CALCULATIONS COMPLY WITH
 A.S.M.E. CODE SECTION VIII DIV. 1

20..... EDITION
 ADDENDA

DWG. CHECKED BY.....
 DWG. APPROVED BY.....

WPS DRAWINGS		NDE	
1	SFI-1 OR SFI-2-1 SK 1	1	MAGNETIC PARTICLE
2	SFI-1 OR SKI-14 SK 2	2	SPOT X-RAY PER UW52
3	SFI-2-1	3	FULL X-RAY PER UW51
4	SEE ATTACHMENT	QCM APPROVAL	
	SFI STOCK	DATE	

POWDER PAINT H.H. GREY PRIMER

ATTACHMENT WPS
 3/16 & BELOW A569 SFI-6
 5/16 & ABOVE A36 SFI-2-1
 STRUCTURAL A36 SFI-2-1
 1/4 A635 SFI-3
 SPECIFIED HEAD MIN. = .099
 CALCULATED HEAD MIN. = .094"

STD. 30 GAL. VERTICAL REC.

FITTINGS = SA181 CL70
 BUILT IN ACCORDANCE WITH THE LATEST EDITION OF THE
 A.S.M.E. CODE, SECTION VIII, DIV. 1, SECTIONS 2, 5, & 9

NO.	DATE	REVISION	QCM	NO.	DATE	REVISION	QCM
7	3/19/97	REVISED & REDRAWN	BW	1	1/18/90	TOP PLATE TO HEAD	GJ
8	3/13/98	TAKE OFF FULL VACUUM	BW	2	8/7/91	WAS CL PLUGS	CC
9	1/07/00	UPDATE TO 99 ADDENDA	BW	3	11/18/91	GENERAL REVISION	CC
10	5/12/00	CHANGE PAINT SPEC.		4	10/19/93	ADDED FULL VACUUM	CC
				5	1/22/97	WAS "U" STAMP	BW
				6	2/26/97	CHANGED FOOT	BW

HEAD THK: .099 MIN. MAT'L SA414-G EFF 85%
 SHELL THK: .121 NOM. MAT'L SA414-G EFF 70%
 NAT'L BD. NO
 STAMP: "UM" STAMP (5)
 CRN: H7951.5C
 REF: SFI STOCK

MAWP 200 PSI AT (8) 450°F
 MDMT -20 °F AT 200 PSI
 TEST: HYDRO AT 260 PSI
 PNEU. AT 260 PSI

OAKVILLE, ONT. STEEL FAB ABINGDON, VA
 DRAWN BY: RGO P/N
 DATE 3/25/89 A10041